

Great Wall Enterprise Co., Ltd.

Investor Conference

2026.5.26

Disclaimer

- 1. This presentation contains certain forward-looking statements that are based on current expectations. These forward-looking statements are subject to known and unknown risks as well as uncertain ties that could cause actual results to differ materially from those expressed or implied by such forward-looking statements.**
- 2. Except as required by law, we undertake no obligation to update any forward-looking statements, whether as a result of new information, future events or others.**

Agenda

- **Financials**
- **Key Events**
- **Q & A**

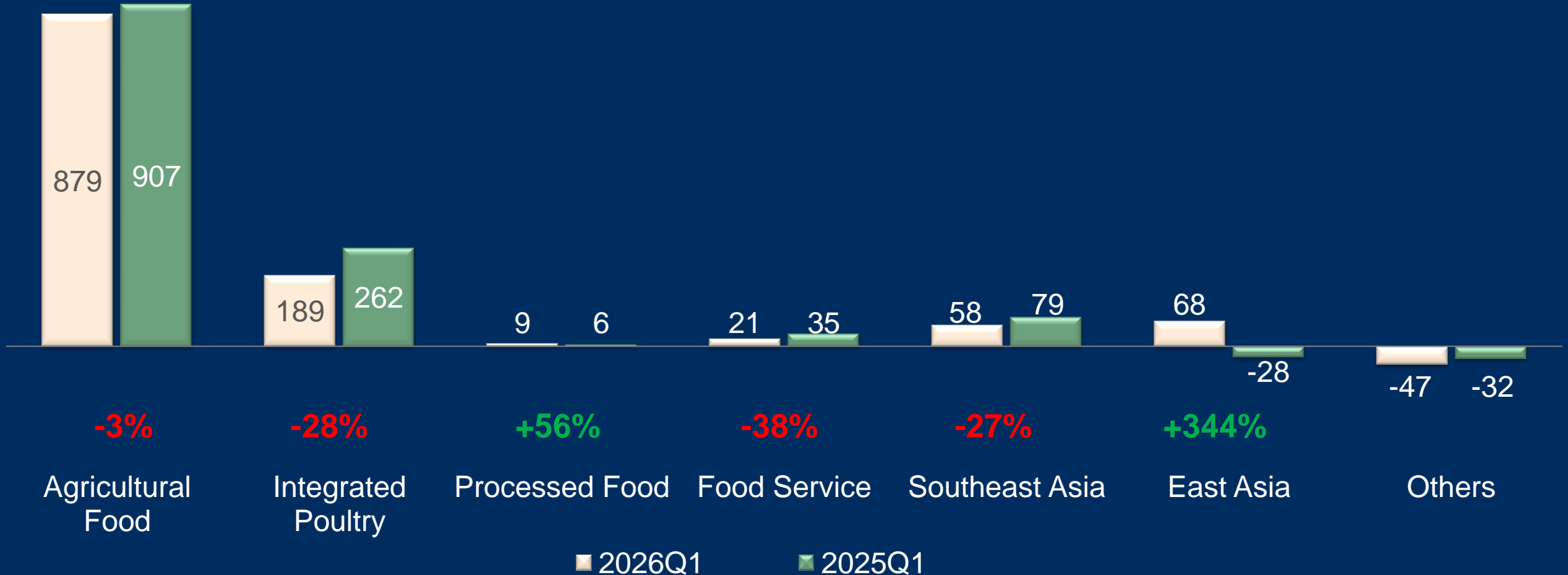
Financials

Consolidated Income Statement

Unit: Million NTD	<u>2023</u>		<u>2024</u>		<u>2025</u>		<u>2025 Q1</u>		<u>2026 Q1</u>		YoY
Net Revenue	111,109	100.0%	102,749	100.0%	101,222	100.0%	25,467	100.0%	26,902	100.0%	5.6%
Cost of revenue	96,148	86.5%	87,949	85.6%	86,358	85.3%	21,549	84.6%	23,118	85.9%	7.3%
Gross Profit	14,961	13.5%	14,800	14.4%	14,863	14.7%	3,918	15.4%	3,784	14.1%	-3.4%
Operating Exp.	8,940	8.0%	9,463	9.2%	10,103	10.0%	2,572	10.1%	2,603	9.7%	1.2%
Operating Inc.	6,020	5.4%	5,337	5.2%	4,761	4.7%	1,346	5.3%	1,181	4.4%	-12.3%
Net Non-Op. Income	-52		283		778		-60		28		
PBT	5,969	5.4%	5,620	5.5%	5,539	5.5%	1,287	5.1%	1,208	4.5%	-6.1%
PAT	4,803	4.3%	4,416	4.3%	4,287	4.2%	1,037	4.1%	969	3.6%	-6.5%
Excl. Minority Interest	4,069	3.7%	3,529	3.4%	3,624	3.6%	883	3.5%	789	2.9%	-10.7%
EPS(NTD)	4.81		4.21		4.33		1.05		0.94		-10.5%
GPM	13.46%		14.40%		14.68%		15.39%		14.07%		
OPM	5.42%		5.19%		4.70%		5.29%		4.39%		
NPM	4.32%		4.30%		4.24%		4.07%		3.60%		

Financials by Business Groups

Unit: Million NTD



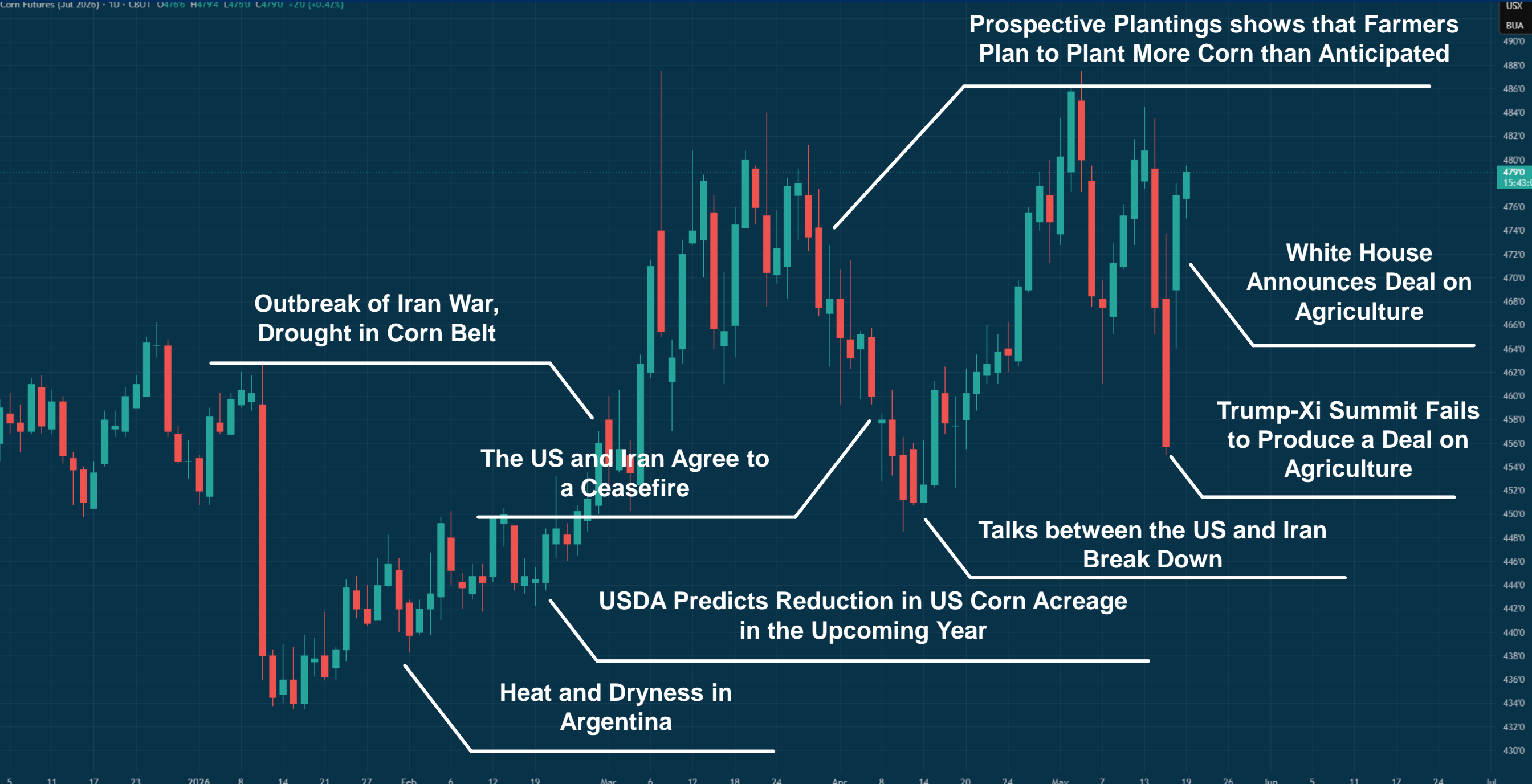
Key Events

Key Events

- **Corn/Soybean Futures**
- **Taiwan Pork Supply**
- **Taiwan Poultry Supply**

Daily Corn Chart

Corn Futures (Jul 2026) • 10 • CBOT U4/60 H4/74 L4/50 C4/70 +20 (+0.42%)



**Outbreak of Iran War,
Drought in Corn Belt**

**The US and Iran Agree to
a Ceasefire**

**Heat and Dryness in
Argentina**

**USDA Predicts Reduction in US Corn Acreage
in the Upcoming Year**

**Prospective Plantings shows that Farmers
Plan to Plant More Corn than Anticipated**

**Talks between the US and Iran
Break Down**

**White House
Announces Deal on
Agriculture**

**Trump-Xi Summit Fails
to Produce a Deal on
Agriculture**

USX
BUA
490'0
488'0
486'0
484'0
482'0
480'0
479'0
15:43:0
476'0
474'0
472'0
470'0
468'0
466'0
464'0
462'0
460'0
458'0
456'0
454'0
452'0
450'0
448'0
446'0
444'0
442'0
440'0
438'0
436'0
434'0
432'0
430'0

Daily Soybean Chart

Soybean Futures (Jul 2026) • 1D • LBU1 U1213U H1216U L12114 C12146 +16 (+0.14%)



Outbreak of Iran War

Trump Delays China Visit

White House Announces Deal on Agriculture

Trump-Xi Summit Fails to Produce a Deal on Agriculture

Trump Announces that China Will Increase its Soybean Purchases

USX

BUA

12600

12500

12400

12300

12200

12100

12000

11900

11800

11700

11600

11500

11400

11300

11200

11100

11000

10900

10800

10700

10600

10500

10400

10300

10200

10100

10000

9900

9800

9700

9600

9500

9400

9300

9200

9100

9000

8900

8800

8700

8600

8500

8400

8300

8200

8100

8000

7900

7800

7700

7600

7500

7400

7300

7200

7100

7000

6900

6800

6700

6600

6500

6400

6300

6200

6100

6000

5900

5800

5700

5600

5500

5400

5300

5200

5100

5000

4900

4800

4700

4600

4500

4400

4300

4200

4100

4000

3900

3800

3700

3600

3500

3400

3300

3200

3100

3000

2900

2800

2700

2600

2500

2400

2300

2200

2100

2000

1900

1800

1700

1600

1500

1400

1300

1200

1100

1000

900

800

700

600

500

400

300

200

100

0

-100

-200

-300

-400

-500

-600

-700

-800

-900

-1000

-1100

-1200

-1300

-1400

-1500

-1600

-1700

-1800

-1900

-2000

-2100

-2200

-2300

-2400

-2500

-2600

-2700

-2800

-2900

-3000

-3100

-3200

-3300

-3400

-3500

-3600

-3700

-3800

-3900

-4000

-4100

-4200

-4300

-4400

-4500

-4600

-4700

-4800

-4900

-5000

-5100

-5200

-5300

-5400

-5500

-5600

-5700

-5800

-5900

-6000

-6100

-6200

-6300

-6400

-6500

-6600

-6700

-6800

-6900

-7000

-7100

-7200

-7300

-7400

-7500

-7600

-7700

-7800

-7900

-8000

-8100

-8200

-8300

-8400

-8500

-8600

-8700

-8800

-8900

-9000

-9100

-9200

-9300

-9400

-9500

-9600

-9700

-9800

-9900

-10000

-10100

-10200

-10300

-10400

-10500

-10600

-10700

-10800

-10900

-11000

-11100

-11200

-11300

-11400

-11500

-11600

-11700

-11800

-11900

-12000

-12100

-12200

-12300

-12400

-12500

-12600

-12700

-12800

-12900

-13000

-13100

-13200

-13300

-13400

-13500

-13600

-13700

-13800

-13900

-14000

-14100

-14200

-14300

-14400

-14500

-14600

-14700

-14800

Q & A