

# **Great Wall Enterprise Co., Ltd.**

## **Investor Conference**

2025.11.27

# Disclaimer

1. **This presentation contains certain forward-looking statements that are based on current expectations. These forward-looking statements are subject to known and unknown risks as well as uncertain ties that could cause actual results to differ materially from those expressed or implied by such forward-looking statements.**
2. **Except as required by law, we undertake no obligation to update any forward-looking statements, whether as a result of new information, future events or others.**

# Agenda

- **Financials**
- **Key Events**
- **Q & A**

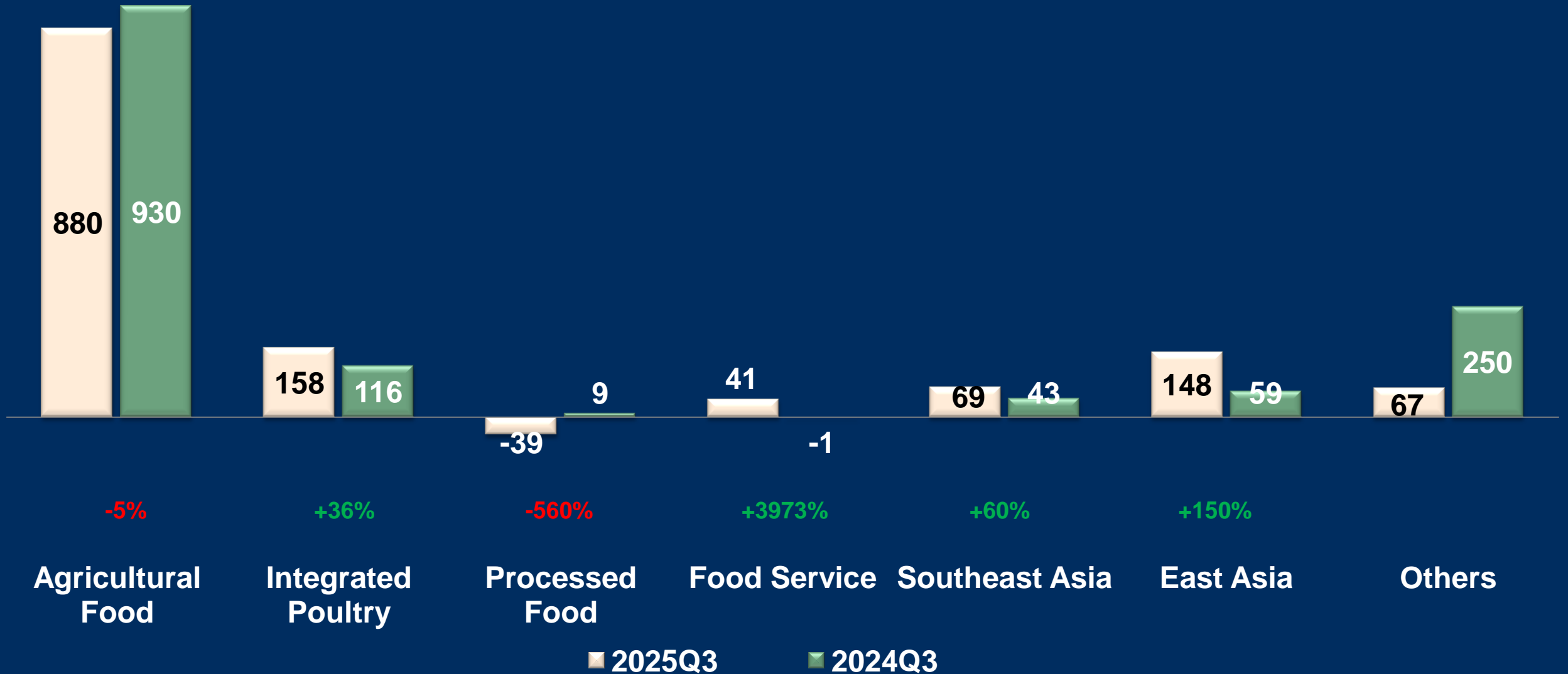
# Financials

# Consolidated Income Statement

Unit: Million NTD	<u>2022</u>		<u>2023</u>		<u>2024</u>		<u>2024 Q3</u>		<u>2025 Q3</u>		YoY
Net Revenue	113,297	100.0%	111,109	100.0%	102,749	100.0%	25,858	100.0%	24,677	100.0%	-4.6%
Cost of revenue	101,939	90.0%	96,148	86.5%	87,949	85.6%	22,153	85.7%	21,013	85.2%	-5.1%
Gross Profit	11,359	10.0%	14,961	13.5%	14,800	14.4%	3,705	14.3%	3,664	14.8%	-1.1%
Operating Exp.	8,301	7.3%	8,940	8.0%	9,463	9.2%	2,589	10.0%	2,583	10.5%	-0.2%
Operating Inc.	3,058	2.7%	6,020	5.4%	5,337	5.2%	1,116	4.3%	1,081	4.4%	-3.2%
Net Non-Op. Income	368		-52		283		178		205		
PBT	3,426	3.0%	5,969	5.4%	5,620	5.5%	1,294	5.0%	1,285	5.2%	-0.7%
PAT	2,850	2.5%	4,803	4.3%	4,416	4.3%	992	3.8%	983	4.0%	-0.8%
Excl. Minority Interest	2,193	1.9%	4,069	3.7%	3,529	3.4%	842	3.3%	781	3.2%	-7.2%
EPS(NTD)	2.59		4.81		4.21		1.00		0.93		-7.0%
GPM	10.03%		13.46%		14.40%		14.33%		14.85%		
OPM	2.70%		5.42%		5.19%		4.32%		4.38%		
NPM	2.52%		4.32%		4.30%		3.83%		3.99%		

# Financials by Business Groups

Unit: Million NTD



# Key Events

# Key Events

- **Corn/Soybean Futures**
- **Taiwan Pork Supply**
- **Taiwan Poultry Supply**

# Daily Corn Chart

Corn Futures (Dec 2025) • 1D • CBOT O434'6 H436'0 L433'2 C433'6 -10 (-0.23%)

USX  
BUA

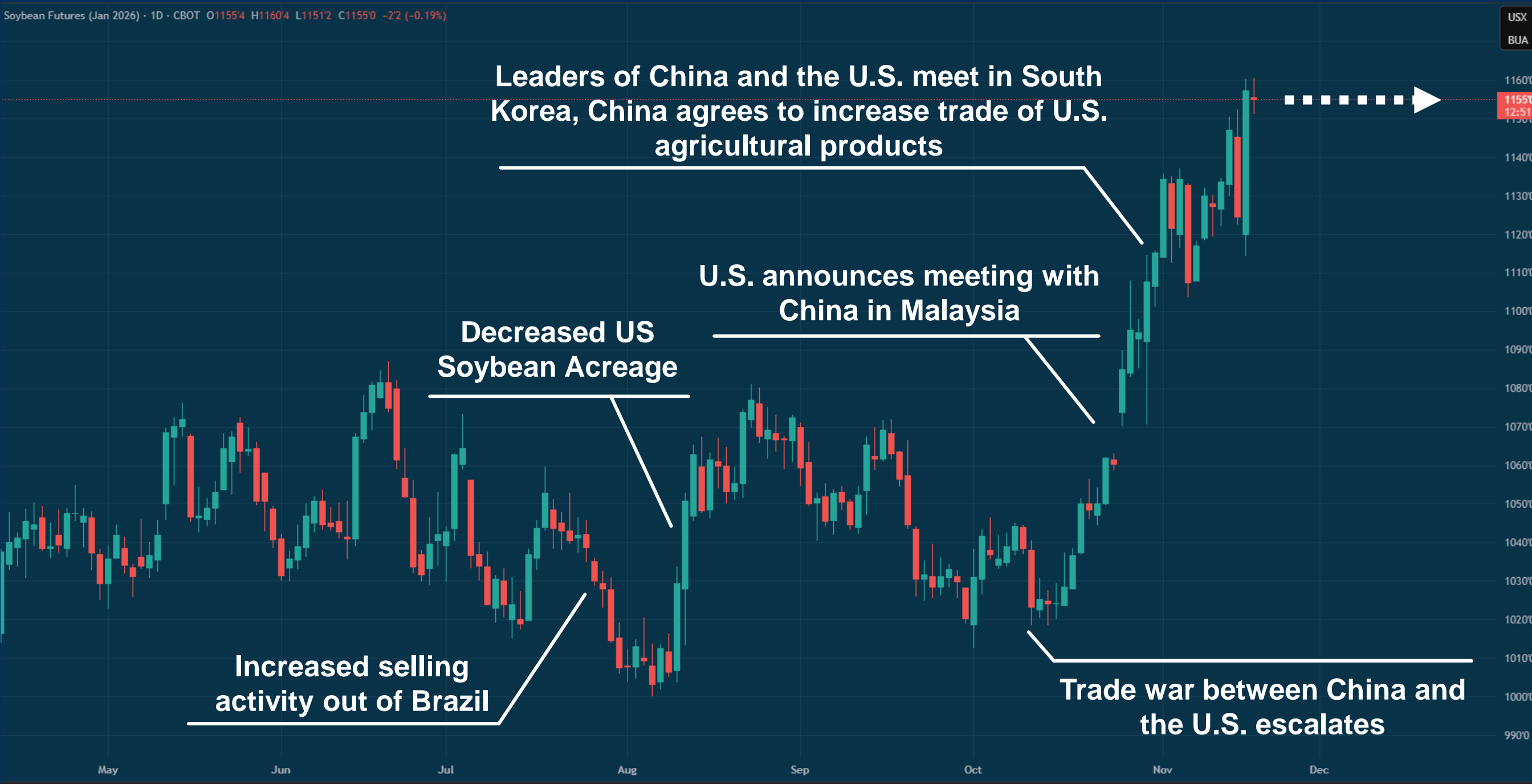


433'6  
13:15:54



# Daily Soybean Chart

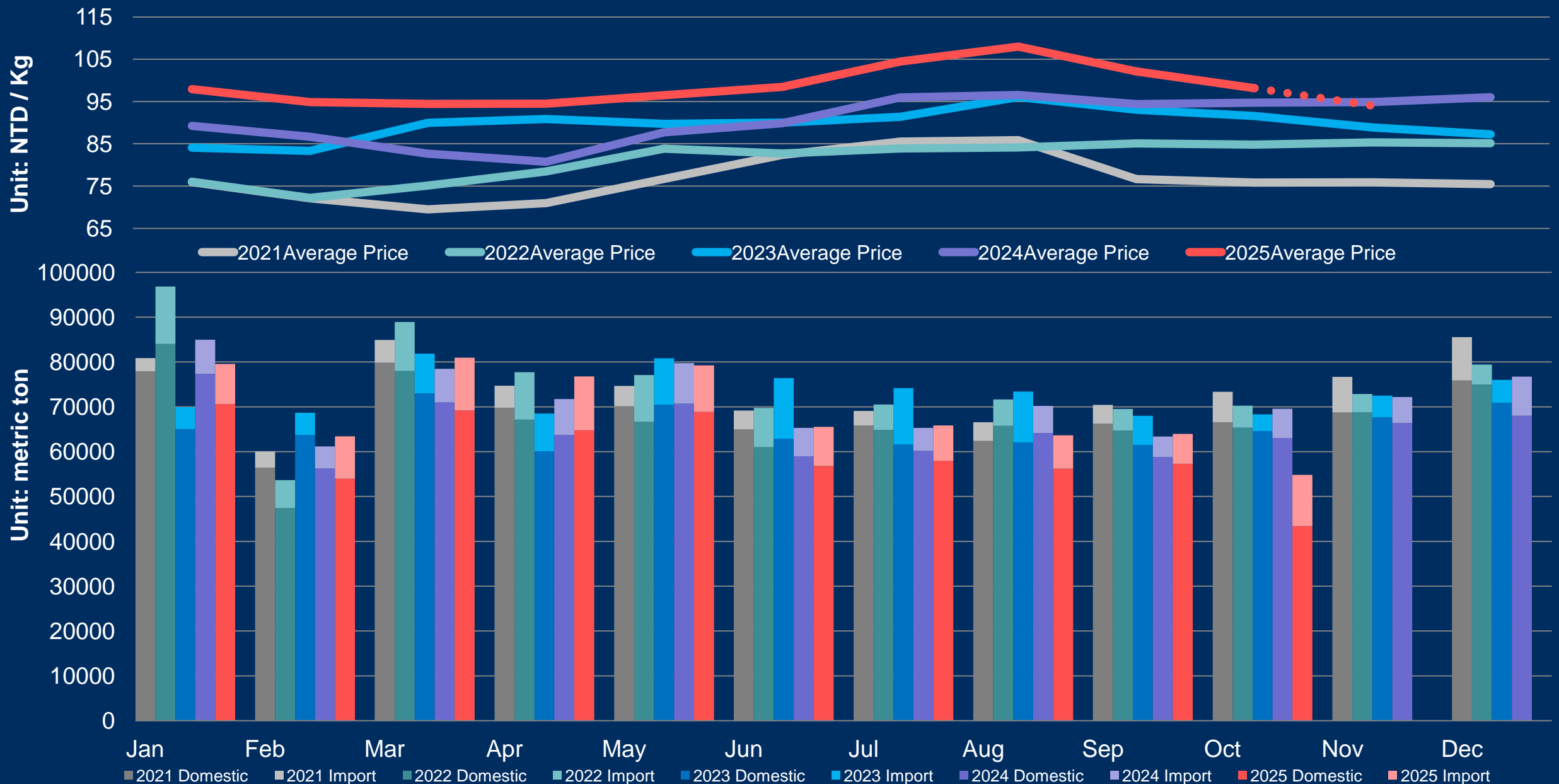
Soybean Futures (Jan 2026) • 1D • CBOT O1155'4 H1160'4 L1151'2 C1155'0 -2'2 (-0.19%)



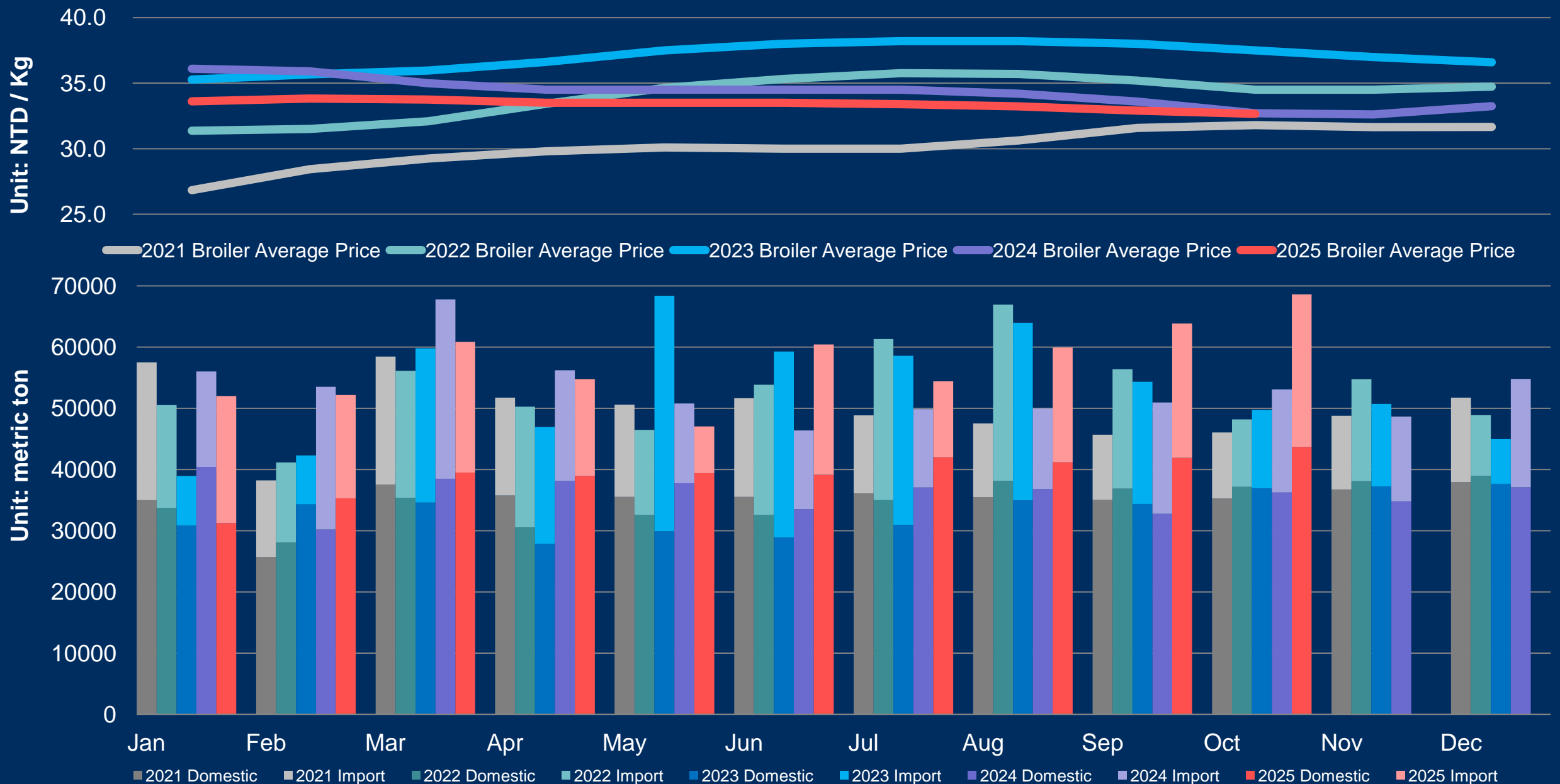
USX  
BUA

11600  
11550  
11500  
11400  
11300  
11200  
11100  
11000  
10900  
10800  
10700  
10600  
10500  
10400  
10300  
10200  
10100  
10000  
9900

# Taiwan Pork Supply



# Taiwan Poultry Supply



**Q & A**