

# **Great Wall Enterprise Co., Ltd.**

## **Investor Conference**

2024.05.16

# Disclaimer

1. **This presentation contains certain forward-looking statements that are based on current expectations. These forward-looking statements are subject to known and unknown risks as well as uncertain ties that could cause actual results to differ materially from those expressed or implied by such forward-looking statements.**
2. **Except as required by law, we undertake no obligation to update any forward-looking statements, whether as a result of new information, future events or others.**

# Agenda

- **Financials**
- **Key Events**
- **Q & A**

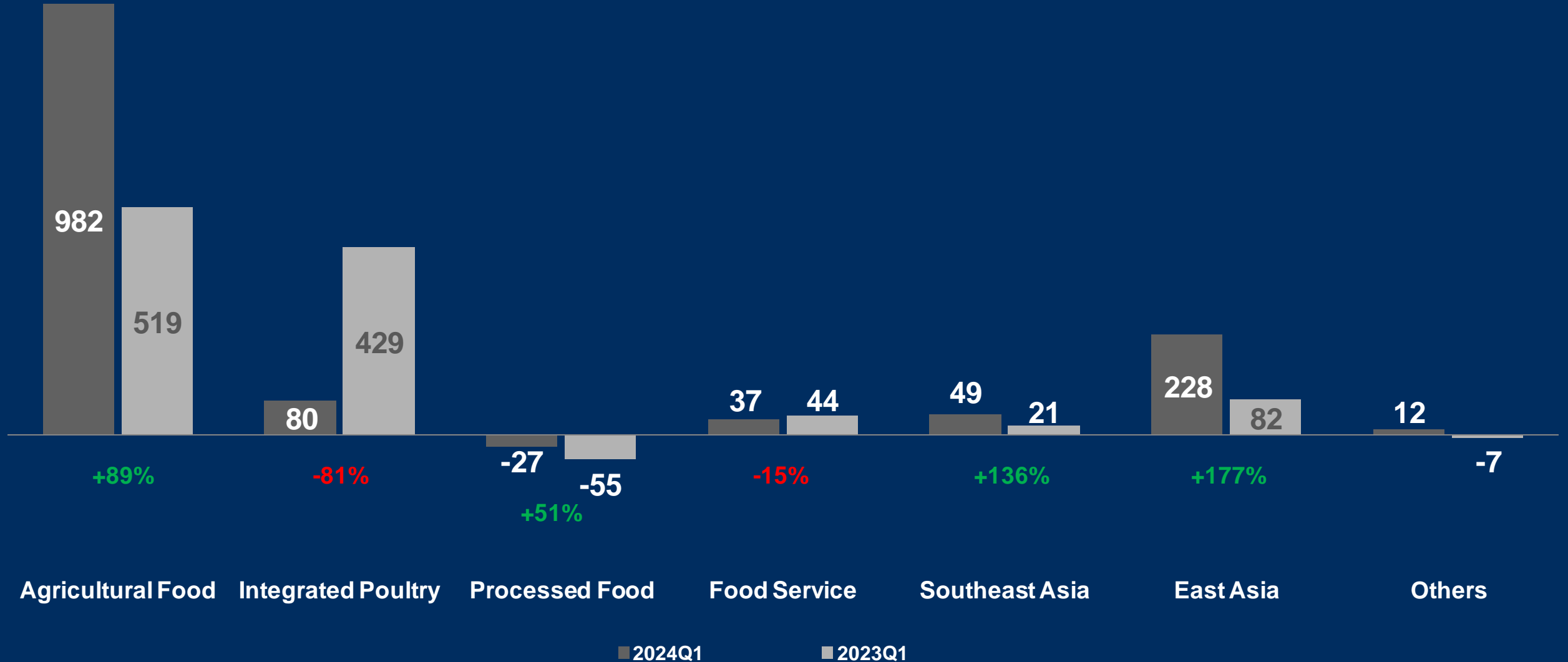
# Financials

# Consolidated Income Statement

Unit: Million NTD	<u>2021</u>		<u>2022</u>		<u>2023</u>		<u>2023 Q1</u>		<u>2024 Q1</u>		YoY
Net Revenue	101,438	100.0%	113,297	100.0%	111,109	100.0%	27,073	100.0%	25,250	100.0%	-6.7%
Cost of revenue	90,701	89.4%	101,939	90.0%	96,148	86.5%	23,860	88.1%	21,654	85.8%	-9.2%
Gross Profit	10,737	10.6%	11,359	10.0%	14,961	13.5%	3,213	11.9%	3,596	14.2%	11.9%
Operating Exp.	8,391	8.3%	8,301	7.3%	8,940	8.0%	2,143	7.9%	2,340	9.3%	9.2%
Operating Inc.	2,345	2.3%	3,058	2.7%	6,020	5.4%	1,070	4.0%	1,256	5.0%	17.4%
Net Non-Op. Income	541		368		-52		-2		0		
PBT	2,887	2.8%	3,426	3.0%	5,969	5.4%	1,068	3.9%	1,256	5.0%	17.6%
PAT	2,262	2.2%	2,850	2.5%	4,803	4.3%	894	3.3%	1,122	4.4%	25.4%
Excl. Minority Interest	1,869	1.8%	2,193	1.9%	4,069	3.7%	762	2.8%	846	3.4%	11.1%
EPS(NTD)	2.21		2.59		4.81		0.90		1.00		11.1%
GPM	10.58%		10.03%		13.46%		11.87%		14.24%		
OPM	2.31%		2.70%		5.42%		3.95%		4.98%		
NPM	2.23%		2.52%		4.32%		3.30%		4.44%		

# Financials by Business Groups

Unit: Million NTD



# Key Events

# Key Events

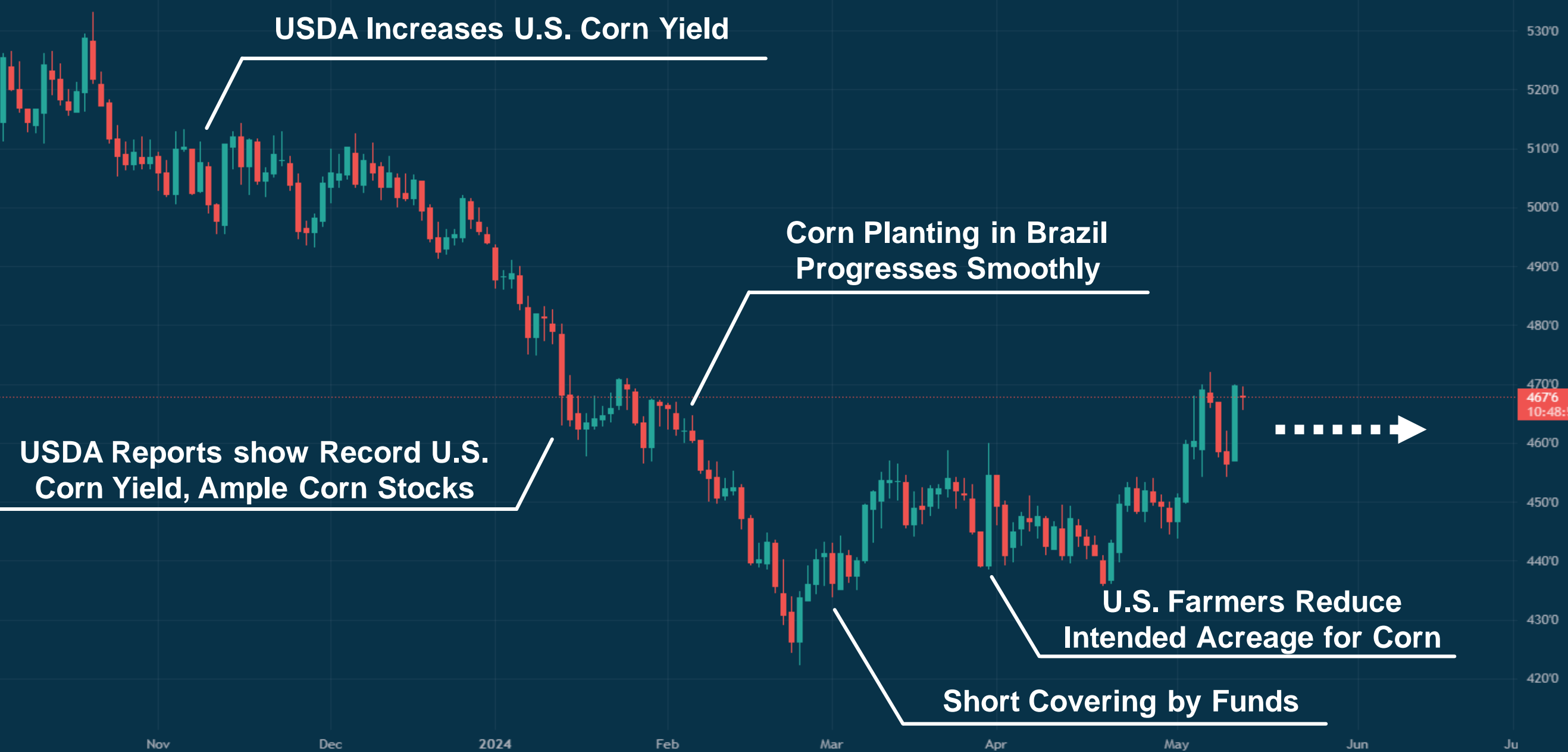
- **Corn/Soybean Futures**
- **Taiwan Pork Supply**
- **Taiwan Poultry Supply**
- **Consumer Foods in North America Market**
- **Holy Chicken**



# Corn Daily Chart

Corn Futures (Jul 2024), 1D, CBOT O468'0 H469'4 L465'4 C467'6 -2'0 (-0.43%)

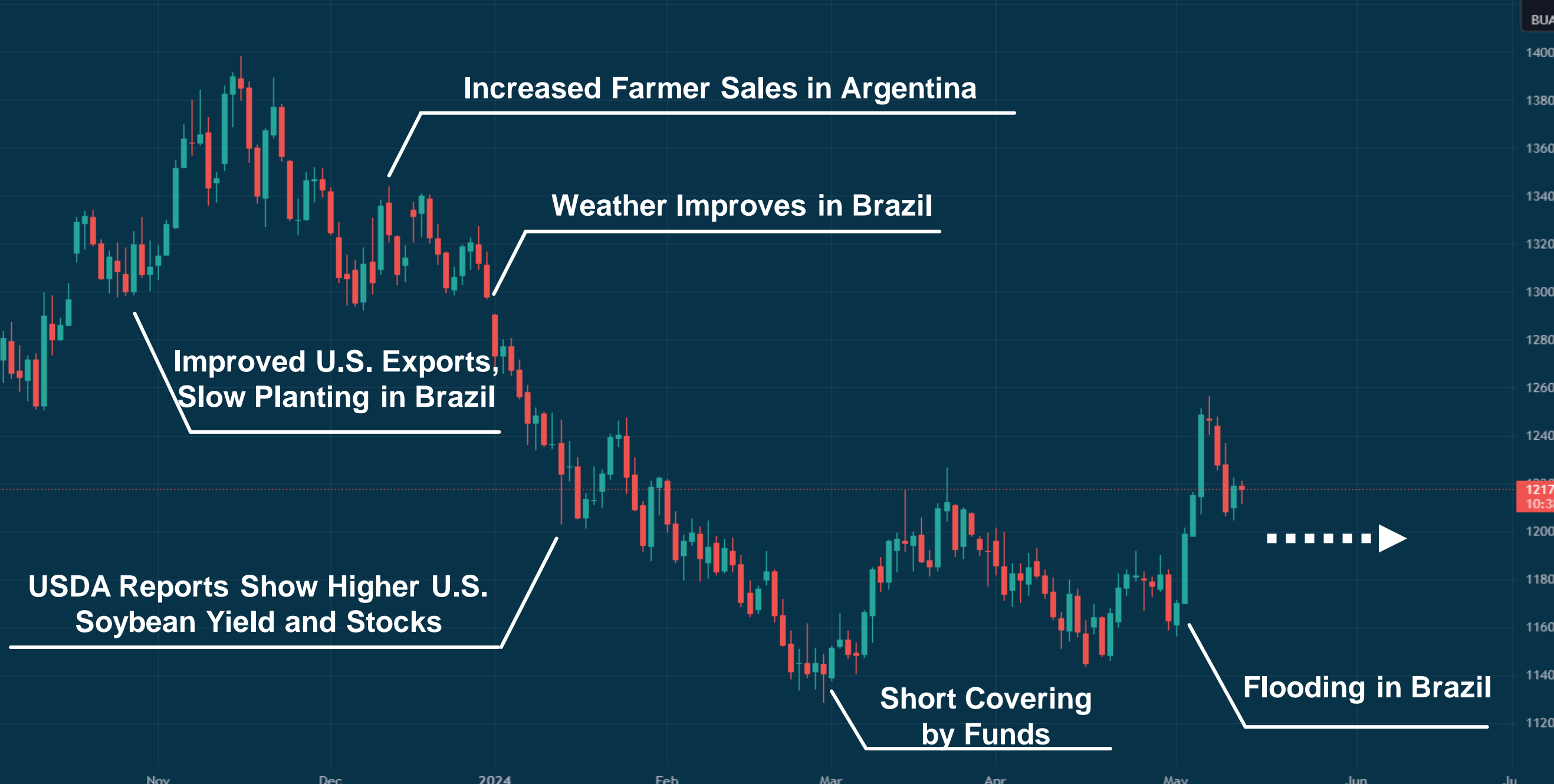
USX  
BUA



470'0  
467'6  
10:48:51

# Daily Soybean Chart

Soybean Futures, 1D, CBOT O1219'0 H1221'2 L1211'4 C1217'6 -1'2 (-0.10%)



Increased Farmer Sales in Argentina

Weather Improves in Brazil

Improved U.S. Exports,  
Slow Planting in Brazil

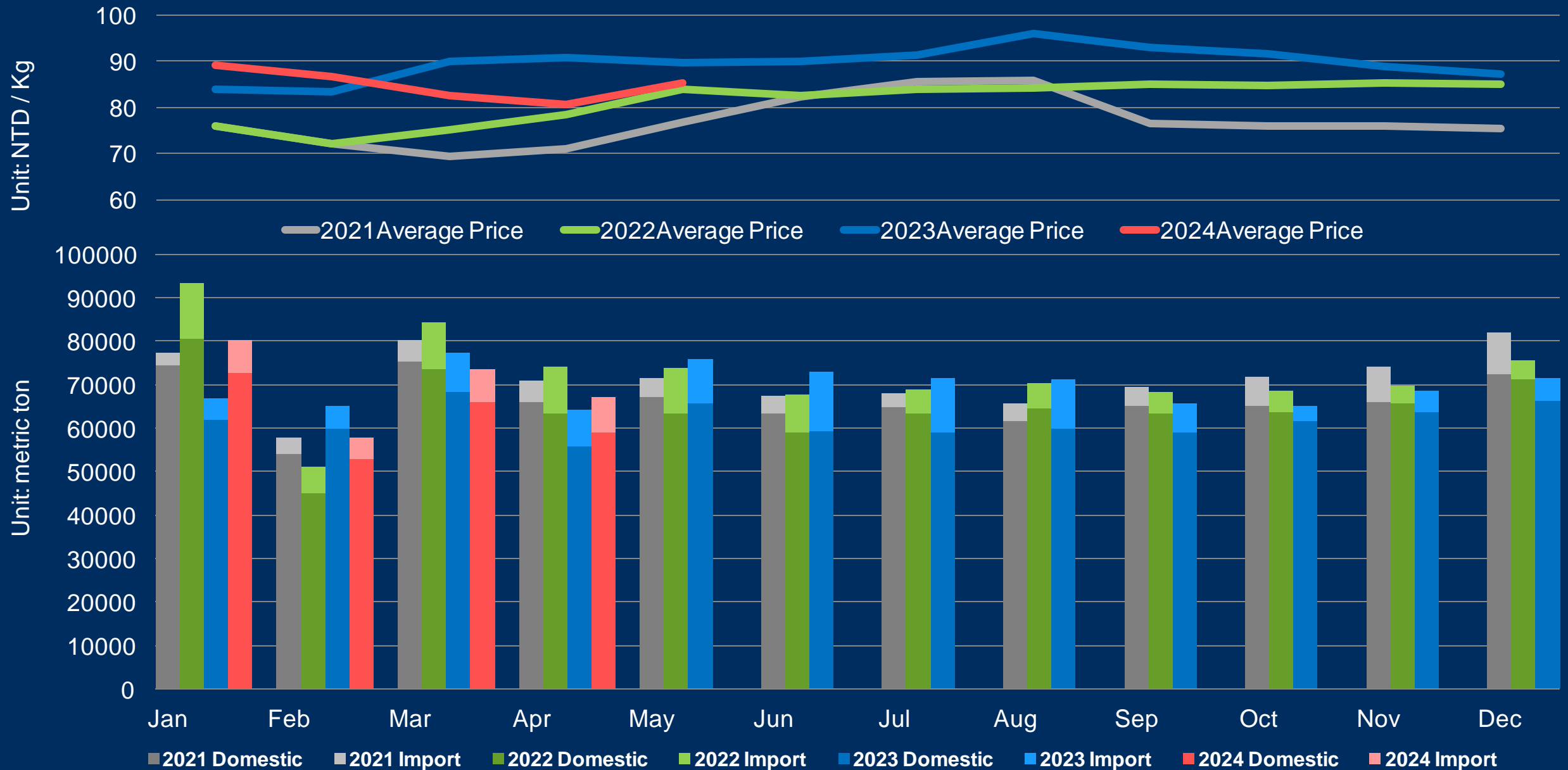
USDA Reports Show Higher U.S.  
Soybean Yield and Stocks

Short Covering  
by Funds

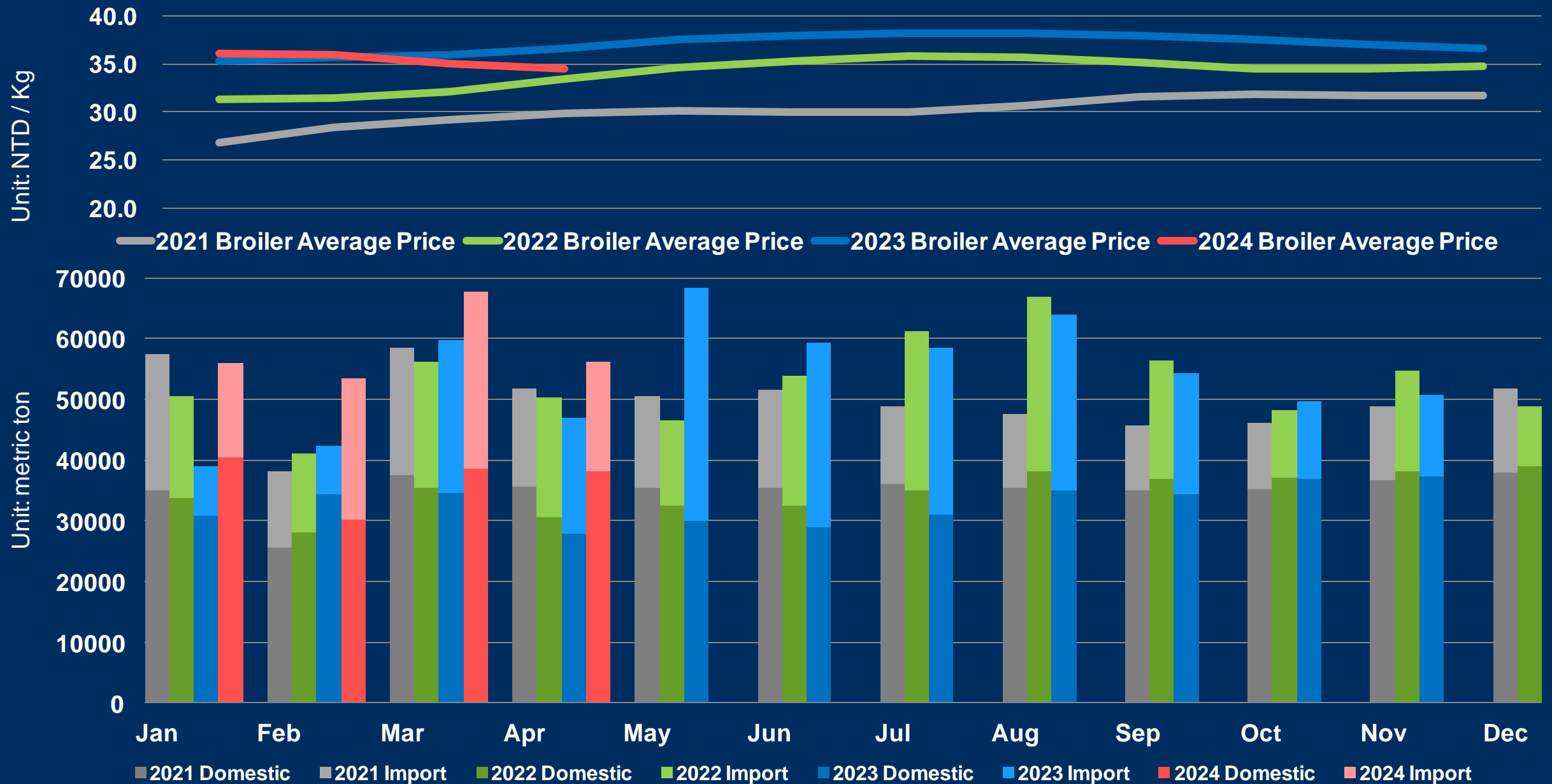
Flooding in Brazil

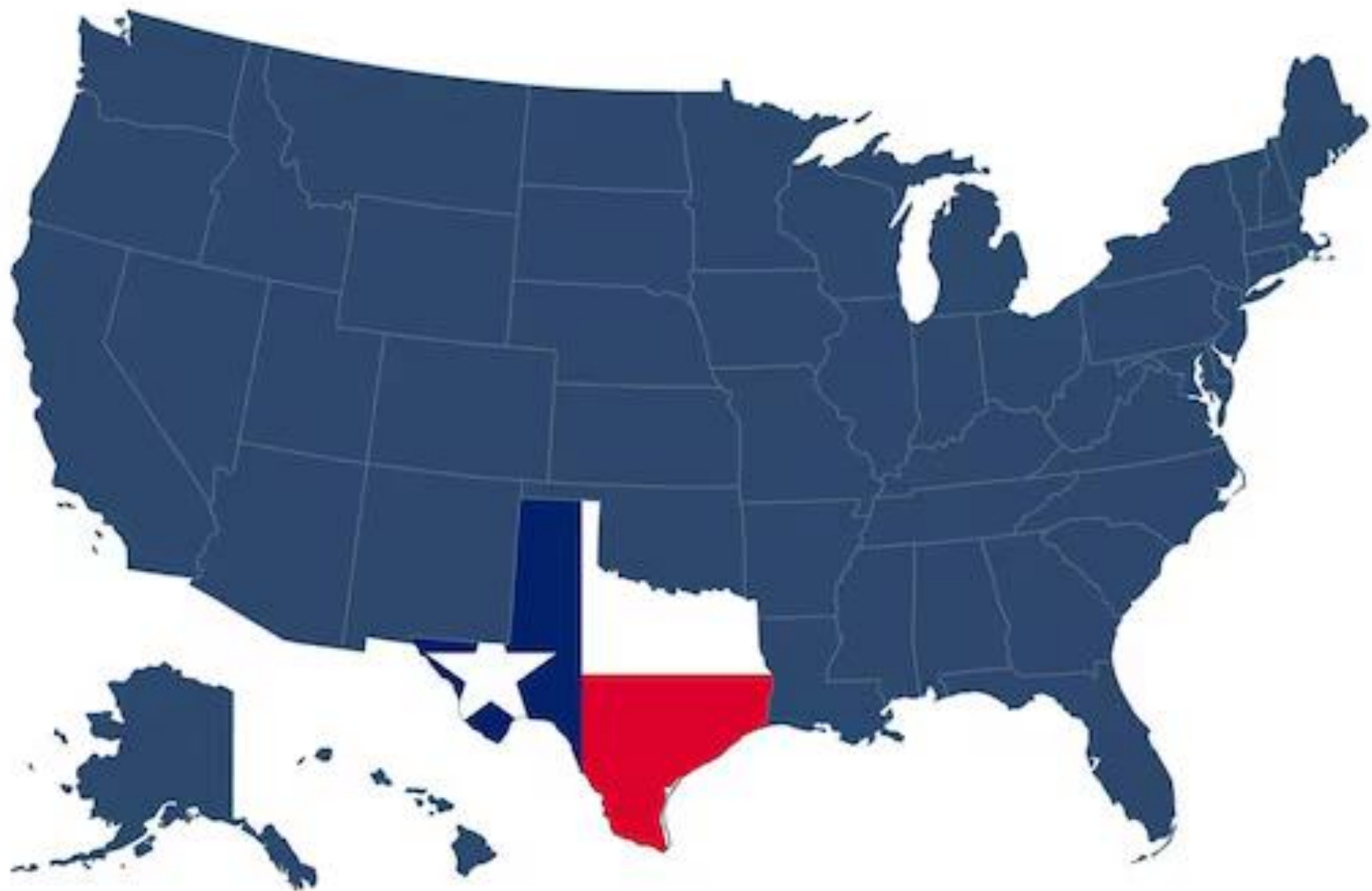
USX  
BUA  
1400'0  
1380'0  
1360'0  
1340'0  
1320'0  
1300'0  
1280'0  
1260'0  
1240'0  
1220'0  
1200'0  
1180'0  
1160'0  
1140'0  
1120'0

# Taiwan Pork Supply



# Taiwan Poultry Supply





TEXAS  
US STATE





**Q & A**