

Great Wall Enterprise Co., Ltd.

Investor Conference

2023.8.17

Disclaimer

- 1. This presentation contains certain forward-looking statements that are based on current expectations. These forward-looking statements are subject to known and unknown risks as well as uncertain ties that could cause actual results to differ materially from those expressed or implied by such forward-looking statements.**
- 2. Except as required by law, we undertake no obligation to update any forward-looking statements, whether as a result of new information, future events or others.**

Agenda

- **Financials**
- **Key Events**
- **Q & A**

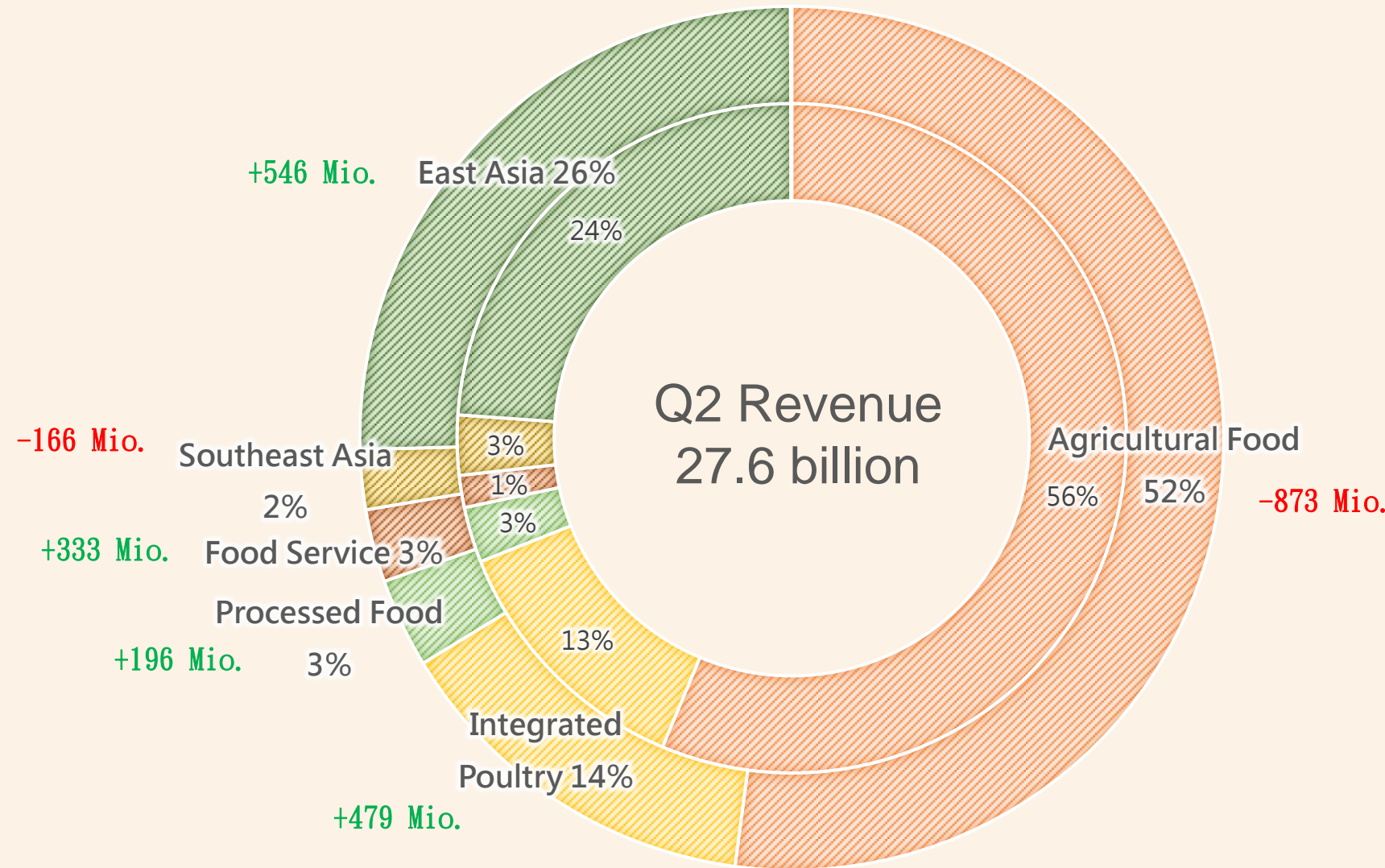
Financials

Consolidated Income Statement

Unit: Million NTD	<u>2020</u>		<u>2021</u>		<u>2022</u>		<u>2022 Q2</u>		<u>2023 Q2</u>		YoY
Net Revenue	81,651	100.0%	101,438	100.0%	113,297	100.0%	27,084	100.0%	27,598	100.0%	1.9%
Cost of revenue	69,389	85.0%	90,701	89.4%	101,939	90.0%	24,290	89.7%	23,847	86.4%	-1.8%
Gross Profit	12,262	15.0%	10,737	10.6%	11,359	10.0%	2,793	10.3%	3,751	13.6%	34.3%
Operating Exp.	8,050	9.9%	8,391	8.3%	8,301	7.3%	2,043	7.5%	2,155	7.8%	5.5%
Operating Inc.	4,212	5.2%	2,345	2.3%	3,058	2.7%	750	2.8%	1,596	5.8%	112.8%
Net Non-Op. Income	772		541		368		60		66		
PBT	4,983	6.1%	2,887	2.8%	3,426	3.0%	810	3.0%	1,662	6.0%	105.2%
PAT	4,072	5.0%	2,262	2.2%	2,850	2.5%	677	2.5%	1,298	4.7%	91.8%
Excl. Minority Interest	3,122	3.8%	1,869	1.8%	2,193	1.9%	518	1.9%	1,075	3.9%	107.6%
EPS(NTD)	3.87		2.21		2.59		0.61		1.27		108.2%
GPM	15.02%		10.58%		10.03%		10.31%		13.59%		
OPM	5.16%		2.31%		2.70%		2.77%		5.78%		
NPM	4.99%		2.23%		2.52%		2.50%		4.70%		

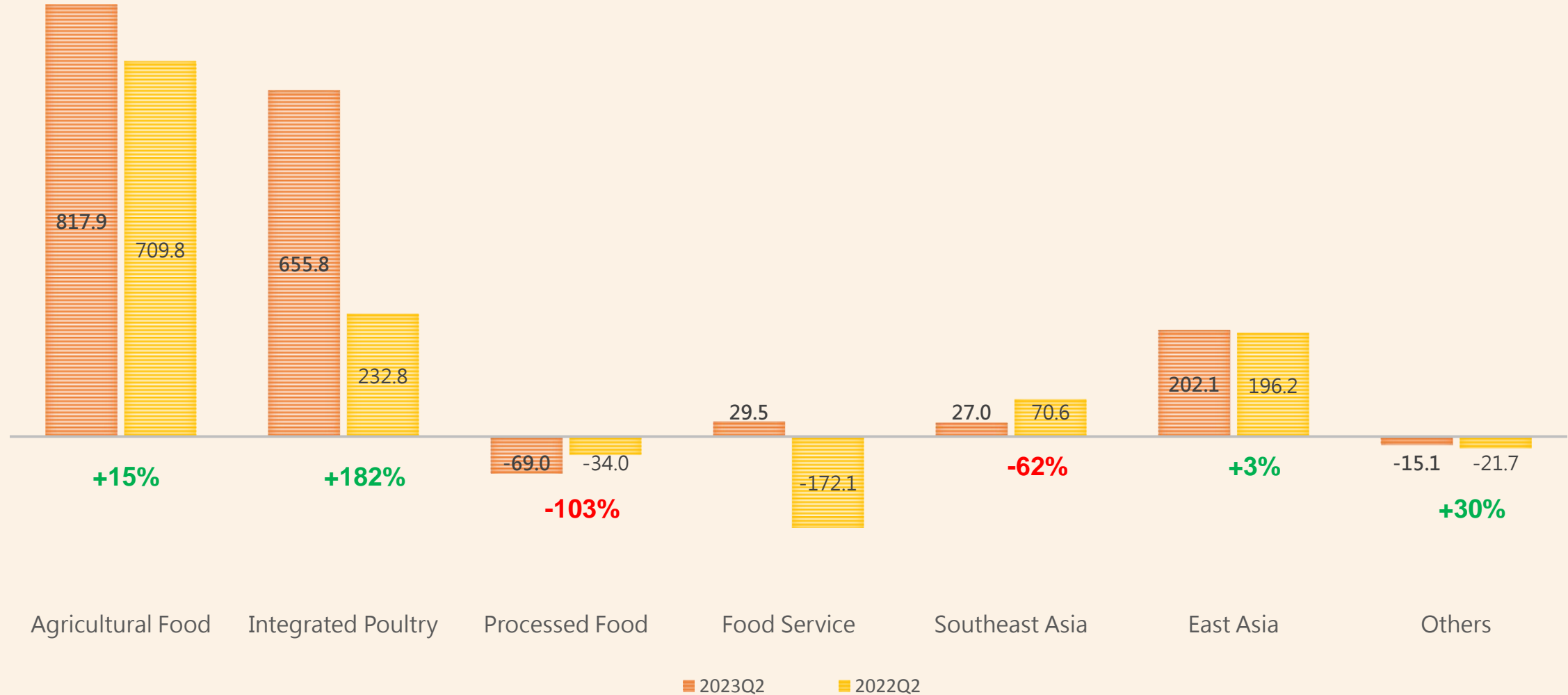
Financials by Business Groups

Unit: Million NTD



Financials by Business Groups

Unit: Million NTD



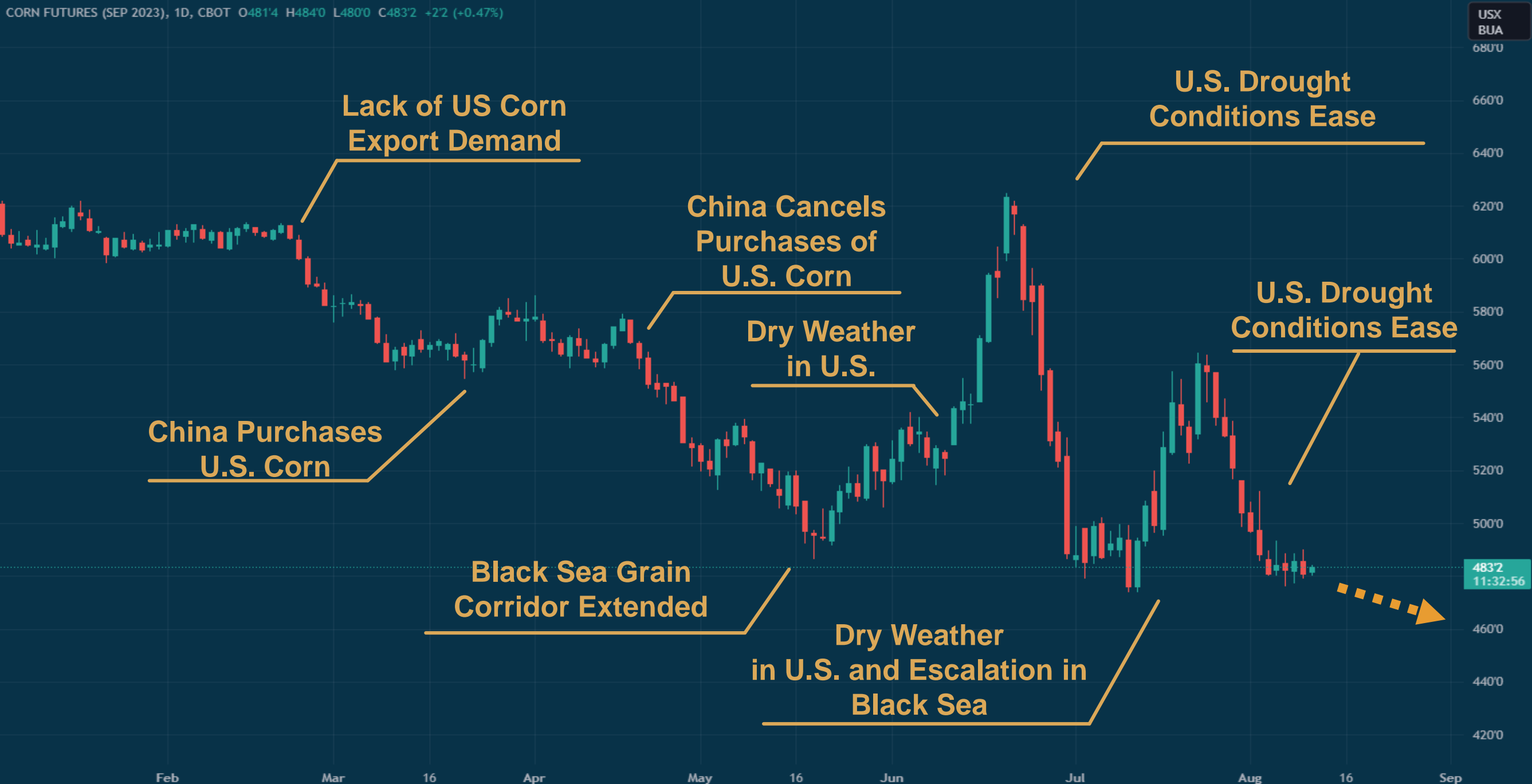
Key Events

Key Events

- **Corn/Soybean Futures**
- **Taiwan Pork Supply**
- **Taiwan Poultry Supply**

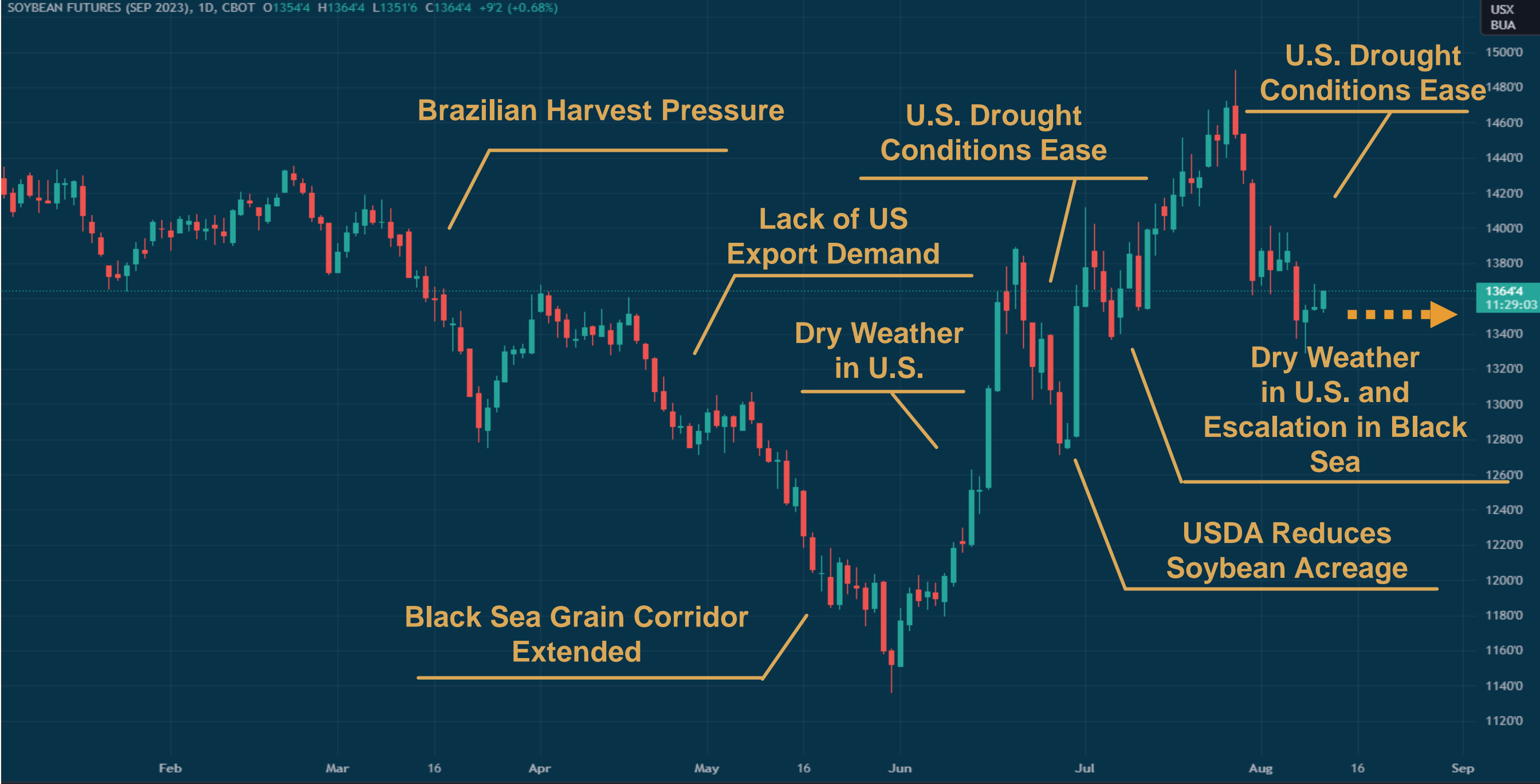
Corn Daily Chart

CORN FUTURES (SEP 2023), 1D, CBOT O481'4 H484'0 L480'0 C483'2 +2'2 (+0.47%)

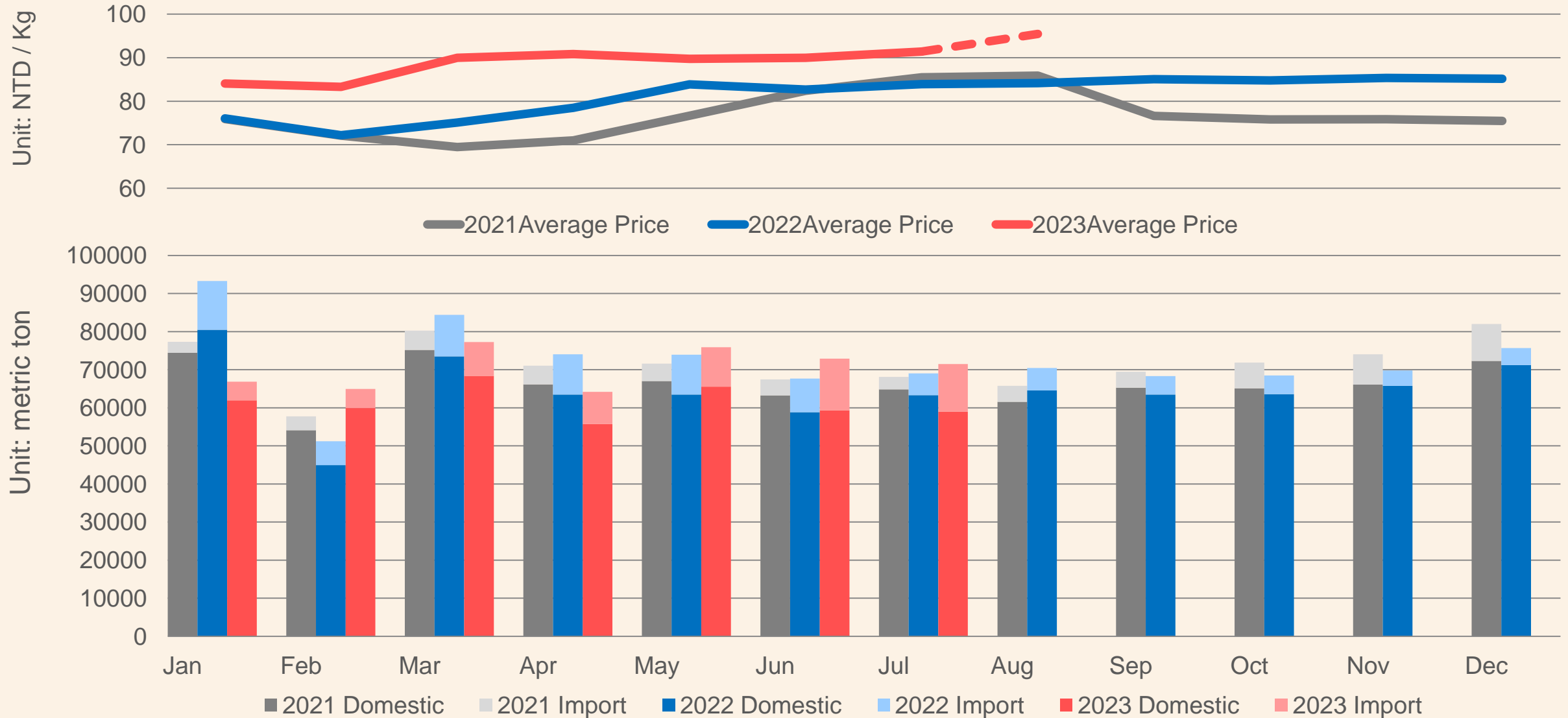


Daily Soybean Chart

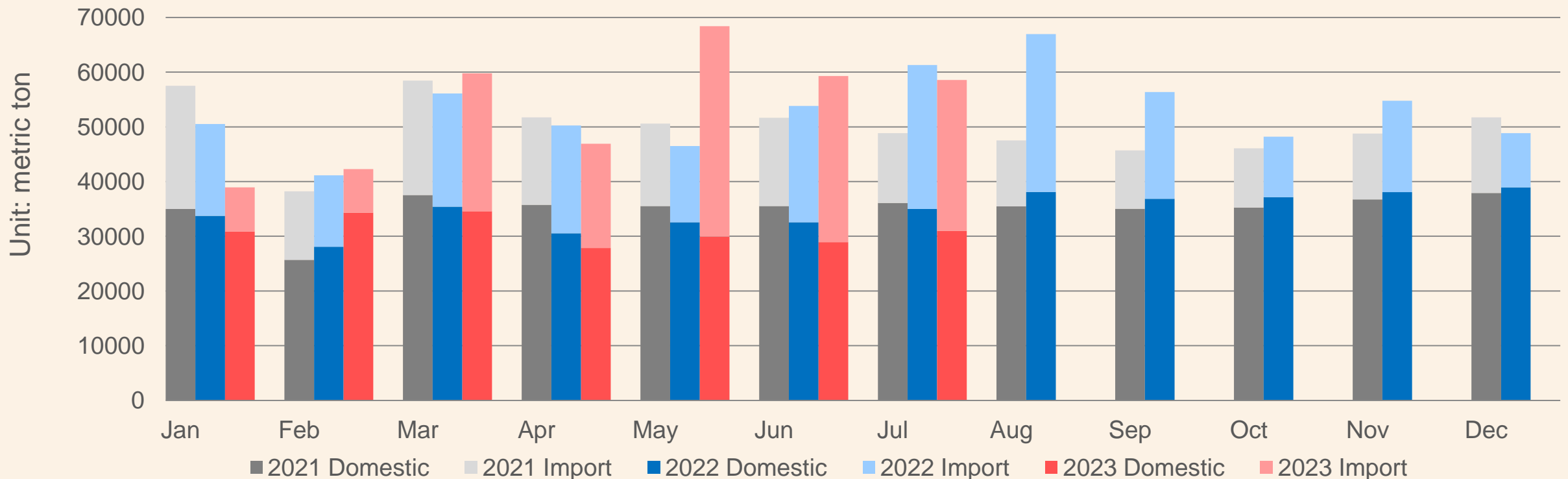
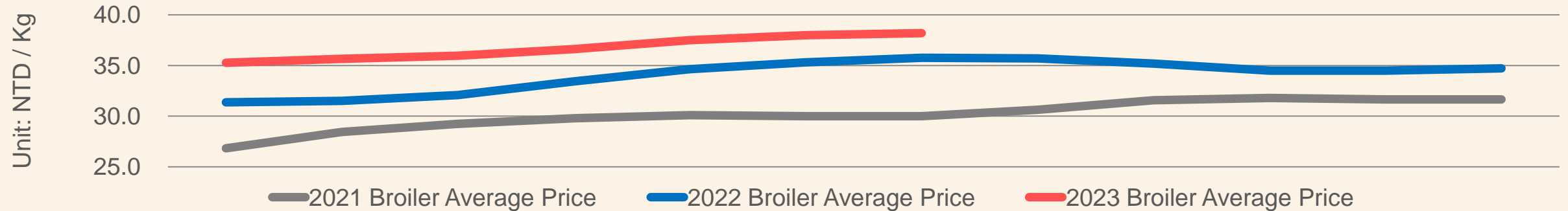
SOYBEAN FUTURES (SEP 2023), 1D, CBOT O1354'4 H1364'4 L1351'6 C1364'4 +9'2 (+0.68%)



Taiwan Pork Supply



Taiwan Poultry Supply





Q & A