

# **Great Wall Enterprise Co., Ltd.**

## **Investor Conference**

2023.5.30

# Disclaimer

- 1. This presentation contains certain forward-looking statements that are based on current expectations. These forward-looking statements are subject to known and unknown risks as well as uncertain ties that could cause actual results to differ materially from those expressed or implied by such forward-looking statements.**
- 2. Except as required by law, we undertake no obligation to update any forward-looking statements, whether as a result of new information, future events or others.**

# Agenda

- **Financials**
- **Key Events**
- **Q & A**

# Financials

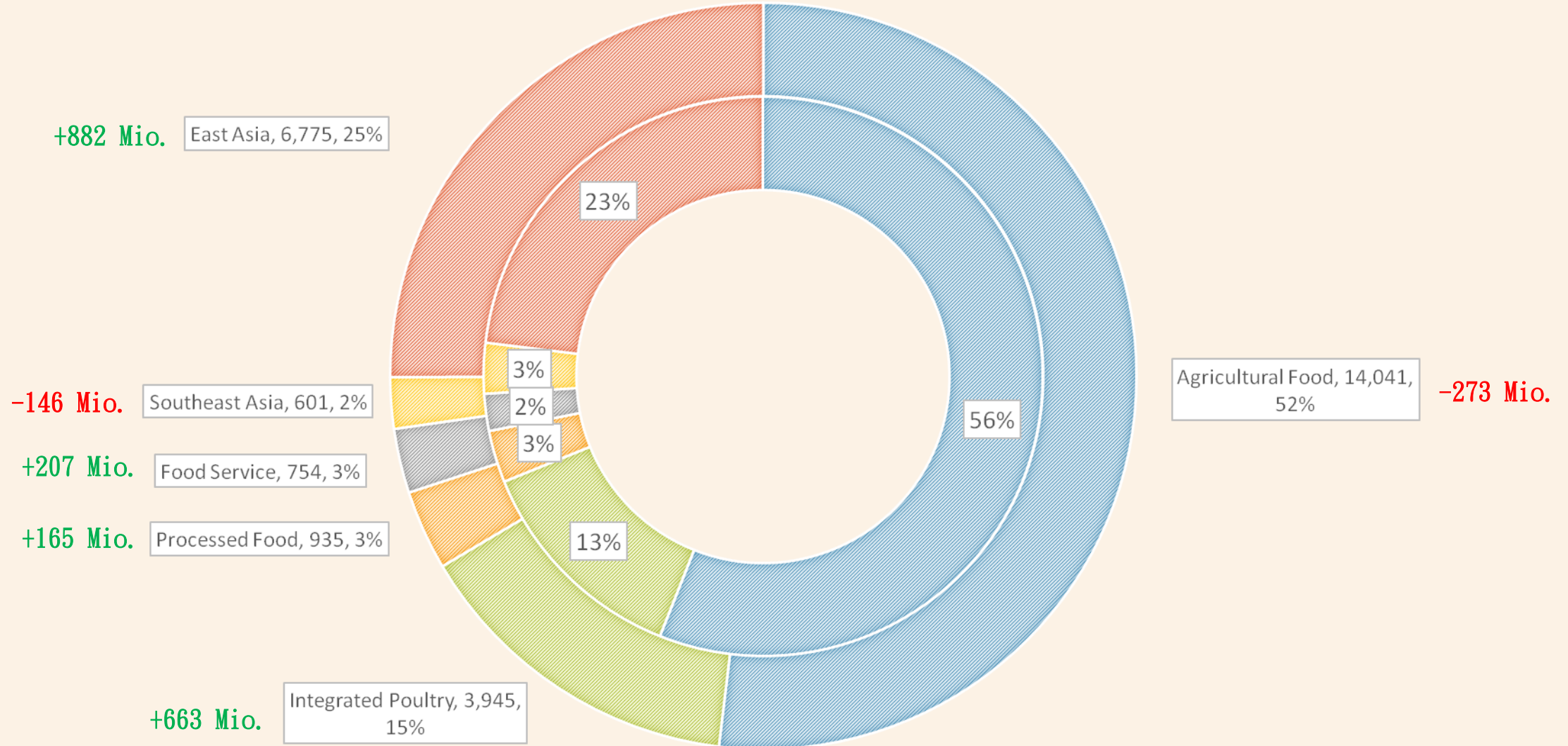
# Consolidated Income Statement

Unit: Million NTD	<u>2020</u>		<u>2021</u>		<u>2022</u>		<u>2022 Q1</u>		<u>2023 Q1</u>		YoY
Net Revenue	81,651	100.0%	101,438	100.0%	113,297	100.0%	25,572	100.0%	27,073	100.0%	5.9%
Cost of revenue	69,389	85.0%	90,701	89.4%	101,939	90.0%	22,992	89.9%	23,860	88.1%	3.8%
<b>Gross Profit</b>	<b>12,262</b>	<b>15.0%</b>	<b>10,737</b>	<b>10.6%</b>	<b>11,359</b>	<b>10.0%</b>	<b>2,579</b>	<b>10.1%</b>	<b>3,213</b>	<b>11.9%</b>	<b>24.6%</b>
Operating Exp.	8,050	9.9%	8,391	8.3%	8,301	7.3%	1,936	7.6%	2,143	7.9%	10.7%
Operating Inc.	4,212	5.2%	2,345	2.3%	3,058	2.7%	643	2.5%	1,070	4.0%	66.4%
Net Non-Op. Income	772		541		368		187		-2		
PBT	4,983	6.1%	2,887	2.8%	3,426	3.0%	831	3.2%	1,068	3.9%	28.6%
PAT	4,072	5.0%	2,262	2.2%	2,850	2.5%	632	2.5%	894	3.3%	41.5%
Excl. Minority Interest	3,122	3.8%	1,869	1.8%	2,193	1.9%	553	2.2%	762	2.8%	37.7%
<b>EPS(NTD)</b>	<b>3.87</b>		<b>2.21</b>		<b>2.59</b>		<b>0.65</b>		<b>0.90</b>		<b>38.5%</b>
GPM	15.02%		10.58%		10.03%		10.09%		11.87%		
OPM	5.16%		2.31%		2.70%		2.52%		3.95%		
NPM	4.99%		2.23%		2.52%		2.47%		3.30%		

# Financials by Business Groups

## Revenue From Non-Subsidiary

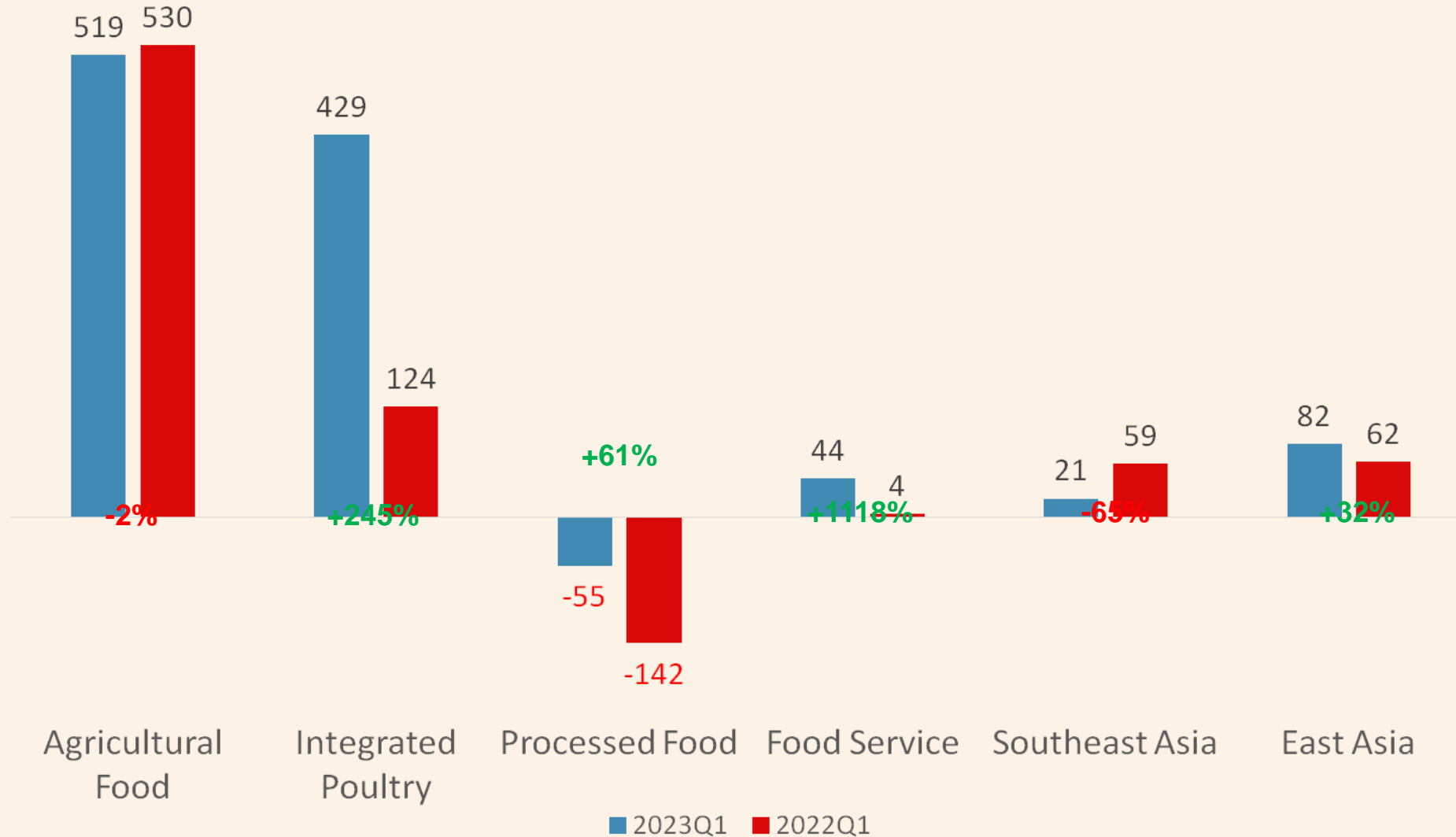
Unit: Million NTD



# Financials by Business Groups

## Revenue From Non-Subsidiary

Unit: Million NTD



# Key Events



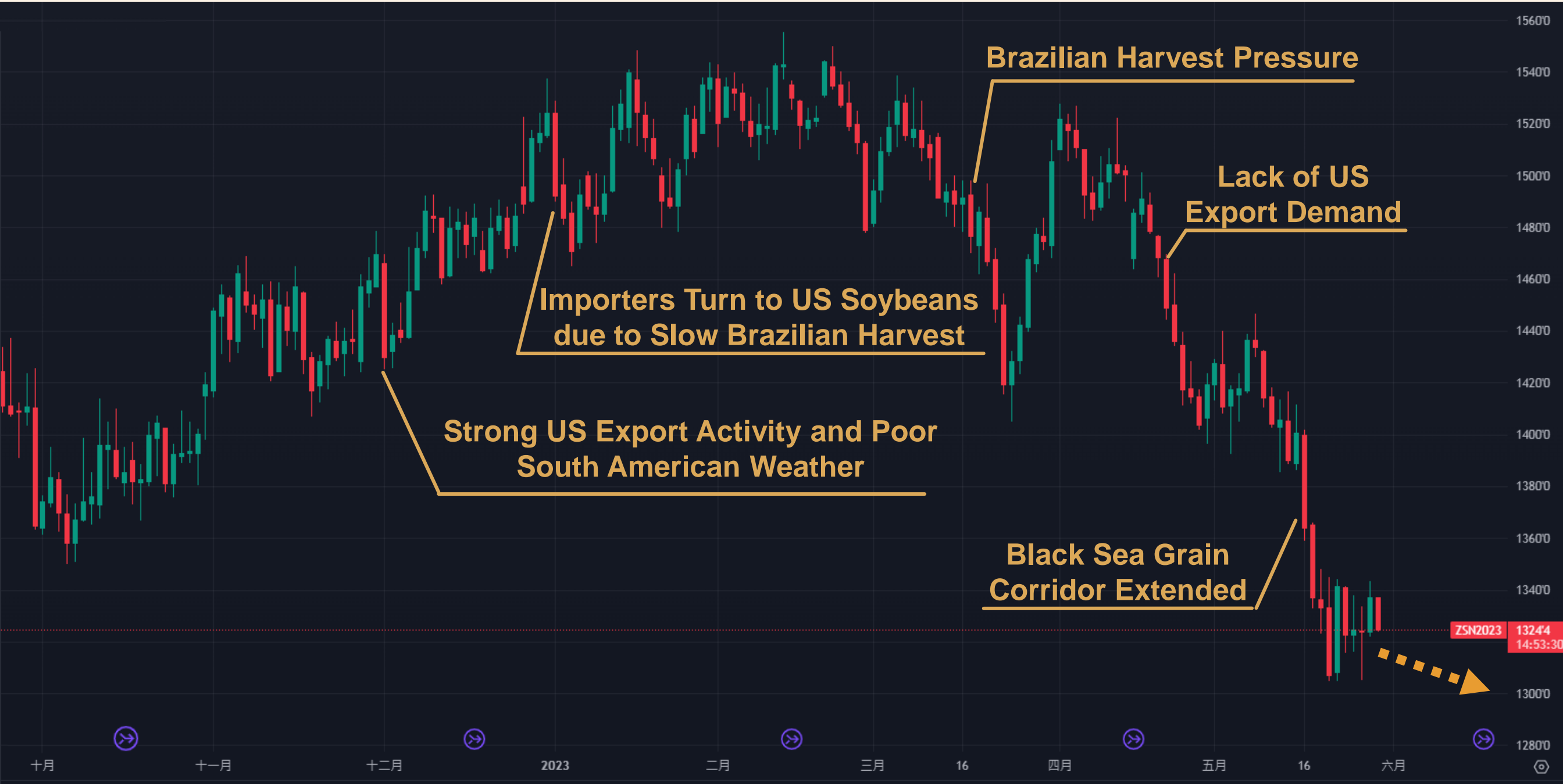
# Key Events

- **Corn/Soybean Futures**
- **Taiwan Pork Supply**
- **Taiwan Poultry Supply**

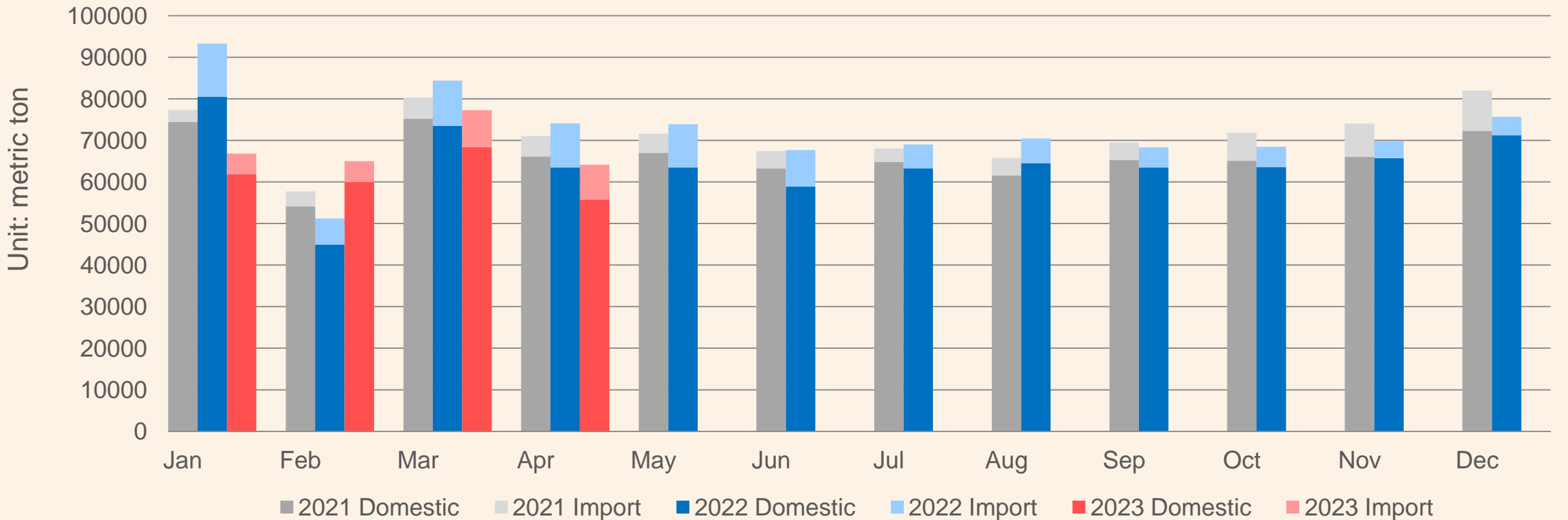
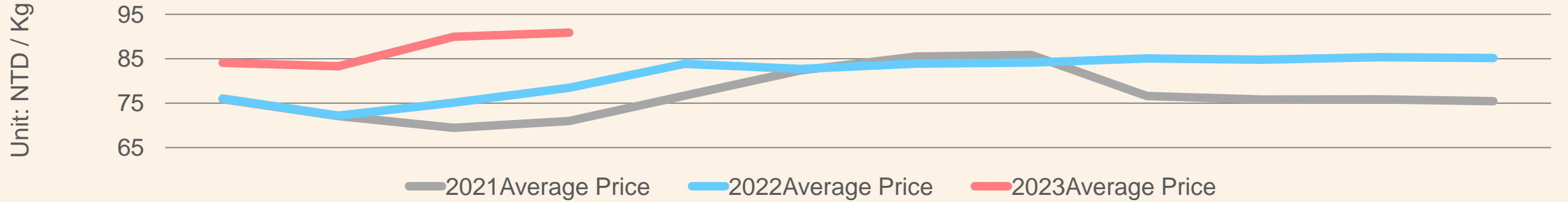
# Corn Daily Chart



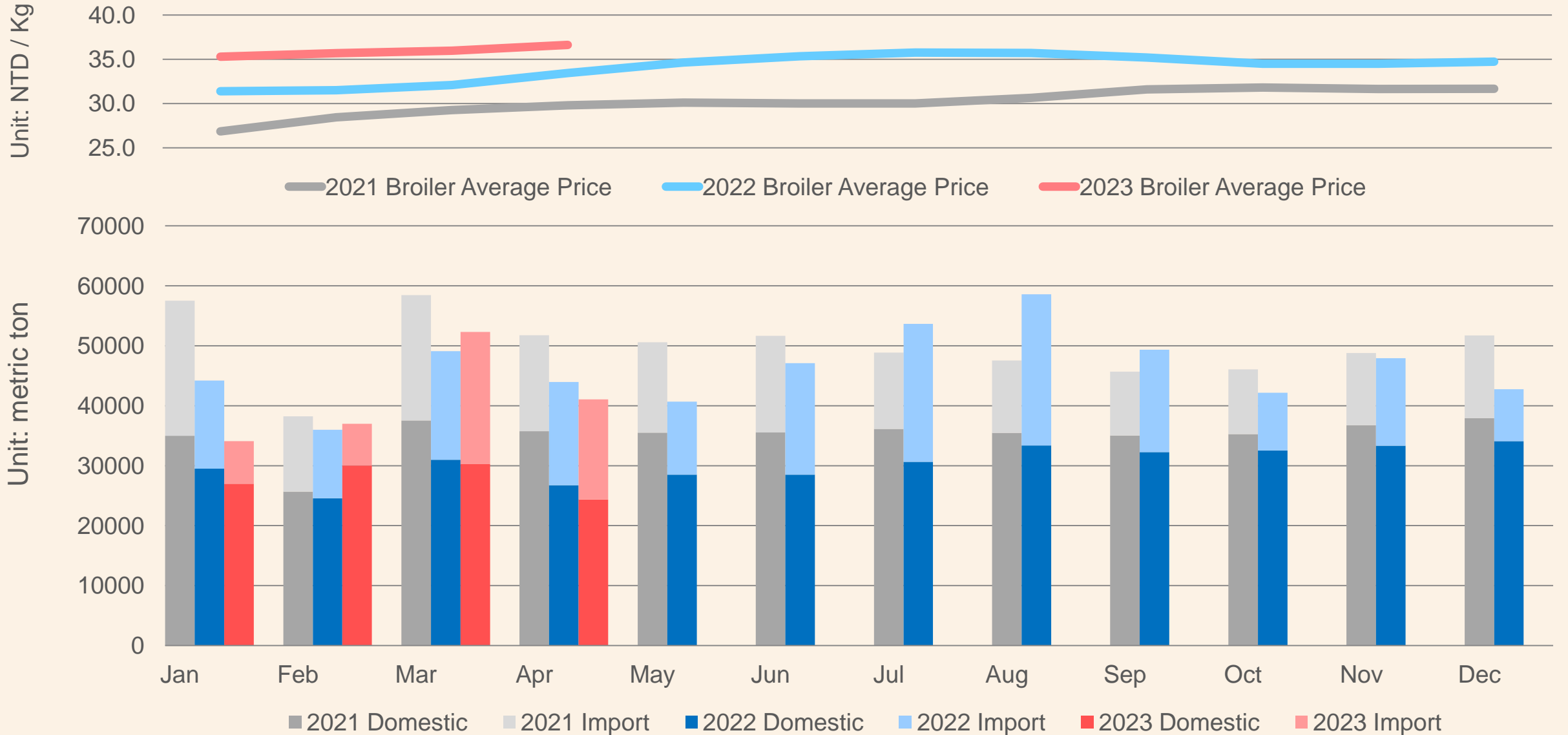
# Daily Soybean Chart



# Taiwan Pork Supply



# Taiwan Poultry Supply







**Q & A**